

## THERMAL SLEEVES WITH VELCRO

HOSES › Tubes for Automation and Robotics

Sheaths made of highly technical fabrics sewn with aramid fiber thread and Velcro suitable for high temperatures.

Materials used:

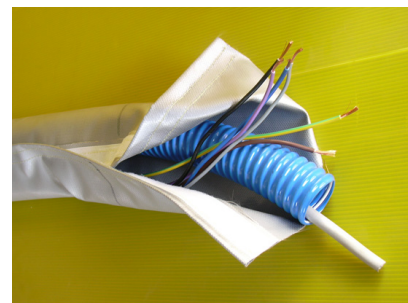
fiberglass/neoprene

fiberglass/silicone

fibreglass/aluminium

fibreglass/ptfe

ceramic fibre



[Mastertubi.it/q?320](http://Mastertubi.it/q?320)

Color depending on the fabric used.

Internal diameters: all starting from 50 mm.

Lengths on request.

Dimension OR mm	Depression mBar	Pressure of work mBar
102	500	3000
127	500	3000
152	500	3000
160	500	3000
178	500	2750
203	500	2750
220	300	2750
229	300	2750
254	300	2250
305	300	1750
356	300	1500

380	300	1300
407	300	1250
425	300	1200
457	300	1100
508	250	1000
525	250	1000
600	200	850
760	150	750