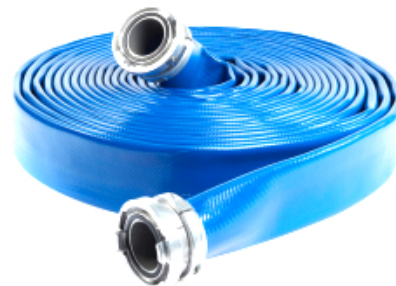


ACQUAFLAT/PU 17/12 bar for drinking water

HOSES › Flexible hoses for liquids suitable for food use

Specially designed for the transfer of drinking water in long pipelines, ideal for emergency delivery or civil protection. Flexible with no leaks for extreme UV and ozone conditions. Total corrosion resistance and minimal twisting when subjected to high pressures. Transfer of liquid and powdered food, supply of potable water to ships/vessels, sewage and water treatment, pipeline bypass and waste transfer.



Approved for drinking water by standards:

- NSF/ANSI/CAN
- Standard 61 Certificate
- Complies with BS 6920:20



Mastertubi.it/q?1444

Color: Blue cover is standard. Other colors are available upon request.

Construction: Made of 100% high tenacity synthetic yarn circularly woven between two layers or a tough and highly resistant thermoplastic polyurethane extruded through the weft, forming a single homogeneous structure without the use of glues or adhesives. Its structure does not allow corrosion or encrustations, while offering high resistance to abrasion and cutting. Easy handling, storage and transport, allowing for quick installation and recovery. Maximum tube elongation of 2% and maximum tube expansion of 10%.

Coating Properties: Guaranteed minimum value of 5,800 psi (40 MPa).

Lengths:

Standard lengths in 660 feet (200 m)
Also available in 200 ft (61 m) version for 2" and 3" diameters
Lengths from 330 feet (100 m) for 4" and 5" diameters
Longer lengths are available upon request.

Abrasion Resistance: Extend the life of your application in extreme conditions where abrasion is the primary concern. In practical conditions, thermoplastic polyurethane is considered the most abrasion resistant elastomer material.

Operating Temperature Range: -58? (-50?) to 150? (+65?), with peaks up to 175? (80?). Special versions for higher and lower temperatures available upon request.

Ozone Resistance: No visible signs of cracking due to ozone. Excellent resistance to weathering and UV rays.

Chemical Resistance: Exposure to sea water and contamination by most chemicals, hydrocarbons, oils and greases has no effect on the short or long term performance of the hose. A chemical resistance chart is available, specific chemical resistance data can be supplied when requested by the purchaser for special applications.

Couplings: Bauer, Victaulic, Storz, Two or three lever ball couplings.

Recommended operating PH range: 4 to 9 below +30°C and 5 to 9 from +30°>50°C

Internal diam.	Wall thickness	Operating pressure	Burst pressure	Traction	Weight
mm	mm	bar	bar	Kg	Kg/m
25	1.8	17	50	2.1	0.17
40	2.0	21	63	4.8	0.35
52	2.0	17	42	5.2	0.39
65	2.2	17	42	5.2	0.52
76	2.3	17	42	7.4	0.64
102	2.7	17	42	9.4	1.00
152	3.2	17	42	17.7	1.75
203	4.3	14	42	35.0	3.30
254	4.5	14	35	45.0	4.10
305	4.7	12	30	55.0	5.10
305	5.0	14	34	70.0	5.28
406	5.2	12	28	80.0	7.60