

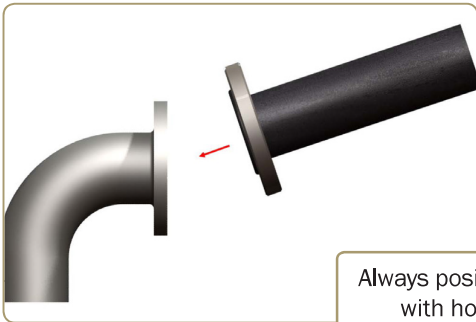
Hose assembly

Handling guide

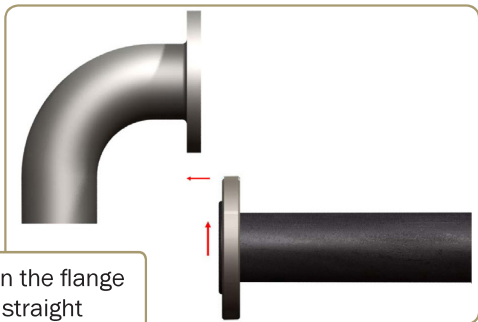
2015

Special care for installation of hose assemblies (diameter above 100 mm).

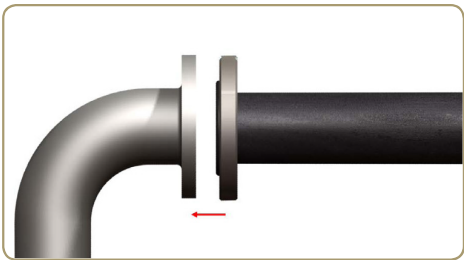
Incorrect



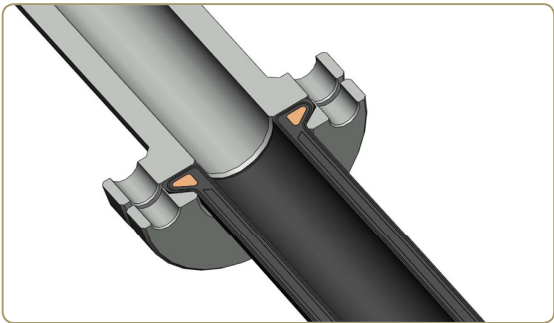
Correct



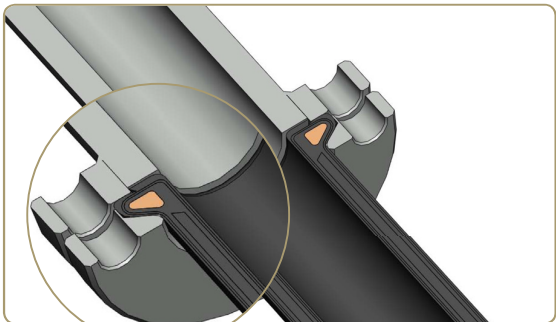
Always position the flange
with hose straight



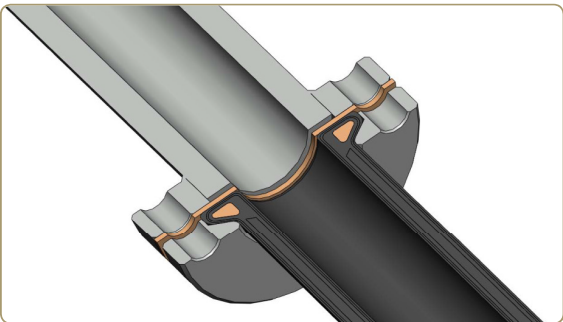
Special care for END-FLEX ends.



CORRECT on flat-face flanges



INCORRECT on raised-face flanges



CORRECT on raised-face flanges with carbon fibre gasket